

The HyPrint data logger systems

The HyPrint data logger systems consist of a battery-powered measuring and storage unit, the HyPrint label, the HyPrint app for controlling and reading the labels (in connection with an NFC-enabled device/smartphone) and the HyPrint cloud, in which e.g. measurement logs (Excel, PDF) can be generated from the information read out.

The HyPrint NFC Temperature Logger HY\_TLOG

The HY\_TLOG is a product from HyPrint GmbH for temperature monitoring, e.g. in the logistics and pharmaceutical industry and for the food industry.

With user-defined time intervals for measuring and recording the temperatures at the desired position (container, pallet, packaging or directly on the product) the HY\_TLOG provides precise data for monitoring temperature controlled products.

The self-adhesive HY\_T\_LOG contains a temperature sensor, a digital memory, a battery and NFC (Near Field Communication) technology.

In the following document you will receive detailed operating instructions for configuring and reading out the label.

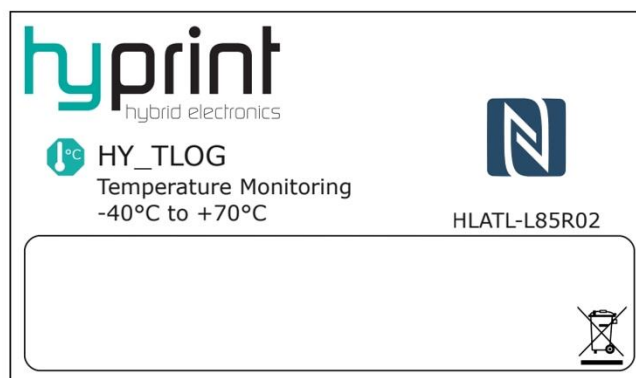


Table of contents:

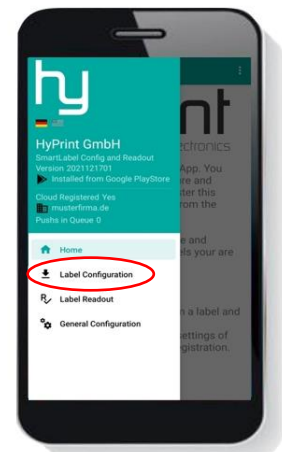
1.	<u>Configure the label</u>	<u>2</u>
2.	<u>Read out with the Hy Label app</u>	<u>4</u>
3.	<u>Read out with the Hy food app</u>	<u>6</u>
4.	<u>Contact</u>	<u>9</u>

# 1. Configure the label

1.1 After opening the app you are in the main menu. You can navigate through the menu at the top left.



1.2 Select the button "Label Configuration".



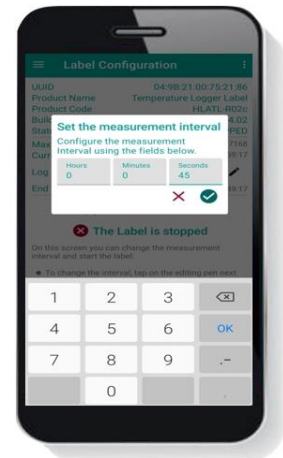
1.3 Hold the phone directly and close to the label to tap it (the phone will vibrate slightly or beep when the connection is established). The upper 5 lines fill up, the label has been identified.

height clearance approx. 1-2cm

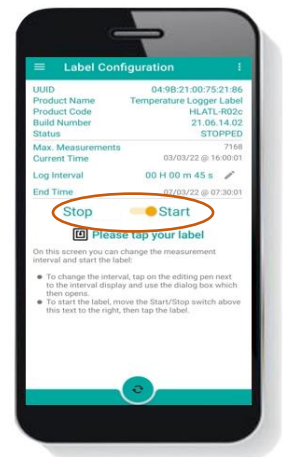


# 1. Configure the label

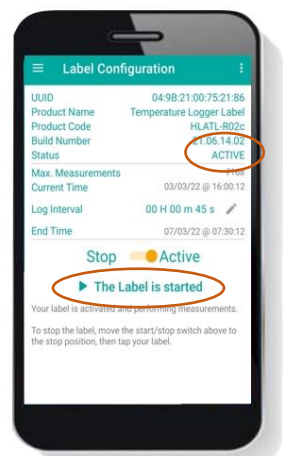
1.4 To change the measurement interval, please press the editing pen next to the interval setting and then enter the desired interval in the dialogue box that opens (in this example 45 seconds). Confirm with the green hook.



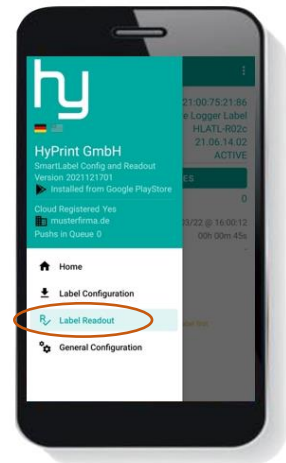
1.5 To start the label, slide the Stop/Start button to the right into start position and tap the label again.



1.6 The measurement has been started now and the status has been set to ACTIVE.



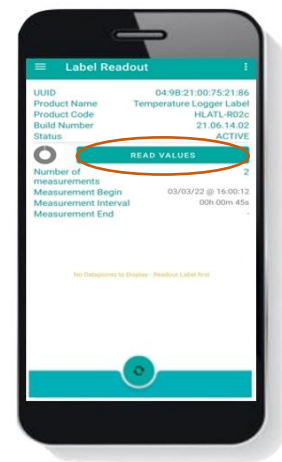
2.1 Choose "Label Readout" on the menu.



2.2 There please press the button "READ VALUES".

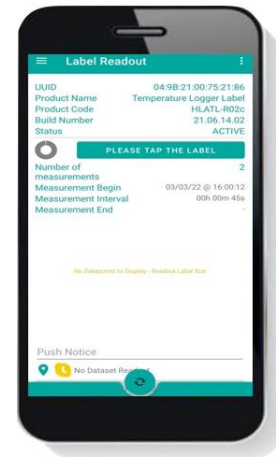
A green bar with a reload sign will appear at the bottom.

If you also want to stop the measurement at the same time, the button in the line "Stop and read label" has to be moved to the right.

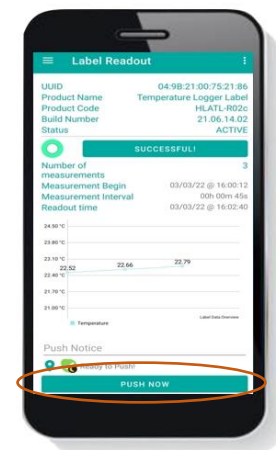


## 2. Read out with the Hy\_Label app

- 2.3 Hold the phone over the label.  
The data resp. temperature curve are now displayed. In this example it is 2 measuring points. The display of the data may take a few seconds.  
Note: If the buttons are gray instead of turquoise, no label is assigned to the app. In this case please configure the label as described on page 2.



- 2.4 Now you can enter a file name or shipment number in the "Push Notice" text field. By pressing the button "PUSH NOW", the data is transferred to the cloud.  
Note: If the button's colour is gray instead of turquoise, possibly the app is not registered in the cloud. Then please follow the operating instructions "Technical settings" from page 2.



## 3. Read out with the Hy\_food app

- 3.1 If the app is not yet registered with the cloud, please connect it to the cloud first. To do this, please follow the instructions in the "Technical Settings" user guide from page 2. If this is done, please press "OK - Go to read out" on the start page of the app.



- 3.2 The main page of the Hy\_food app appears. You can now tap the label by holding the mobile phone about 1-2 cm above the label. No further settings are required.



3.3 As soon as the first positive-sounding tone sounds, the data has been successfully read out. A second tone confirms the transfer to the cloud. Two green thumbs up will appear on the screen. By clicking the button "Next Label" you can read out the next label.



3.4 If you hear a rather dark, negative-sounding tone, the transfer has failed. A red thumb pointing down appears on the screen. Then please try again.



3.5 Reading out even works if your mobile phone is not currently connected to WiFi or the internet. However, the data is then not immediately transferred to the cloud. The push is currently in the queue. In the line marked red on the right there is a 1 or 2, 3, 4 etc. if you read out several labels. As soon as your mobile is reconnected to the WLAN, the data will be transferred immediately. You don't have to do anything else.





You have further questions? We look forward to hearing from you!

Andreas Laib  
Managing Director  
T 06221 - 4263457  
M 0151 - 645 909 09  
[andreas.laib@hyprint.de](mailto:andreas.laib@hyprint.de)

Christian Breiner  
Business Development & Sales  
T 06221 - 4263457  
M 0177 - 71 500 41  
[christian.breiner@hyprint.de](mailto:christian.breiner@hyprint.de)

hyprint  
hybrid electronics

HyPrint GmbH  
Business Development Center (BDC)  
Carl-Friedrich-Gauß-Ring 5  
69124 Heidelberg  
[www.hyprint.de](http://www.hyprint.de)